

Lab CAN Pro

Designed for more programmable stand-alone testing environment

INCLUDES upgraded support for GPIO interface with 2 inputs and 2 outputs. Supports live bus playback and gateway functionality. A micro-SD reader and the ability to be powered externally via DB9 for standalone datalogging, as well as a peripheral interface through the Qwiic® I2C bus interface.



Superior Performance

- Simultaneous Dual CAN Bus
- Time Stamping Resolution 1 μ s
- Supports CAN 2.0A, 2.0B, ISO and non-ISO CAN FD
- Supports CAN Baud Rate support up to 10Mb/s
- Off-line data viewer
- Built-in Graphical Data Analyser
- High Speed CAN FD offline hardware data logging via micro-SD



Streamlined Setup & Easy to Use

- Driver Free Windows Installation
- Set up to automatically detect hardware
- One common software detects all hardware models
- 8Gb industrial micro-SD card included



Support & Resources

- One time purchase (No recurring license fees)
- One year Warranty
- Support & updates at www.serosys-tech.com
- In-Program Software and firmware updatable



USB Bus Powered, Rack mountable & Upgrades

- High Speed USB 2.0 or DB9 Powered
- Able to convert to available Rack mount or Vehicle mount with a 3D printable bracket
- Peripherals access via **Qwiic** expansion connector
- 4 GPIO (2 input/2 output)

Applications

Vehicle system debug and testing

Programmable Stand-alone mode for Initialization and Keep-Alive for ECU testing

Remote TCP/IP Interface for Command-and-Control Test platform Integration

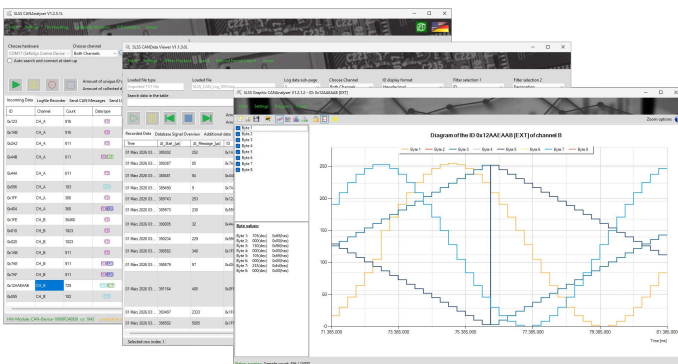
Standalone data-logging without PC connection

Expandability for future advanced peripherals

GPIO trigger access to the real world

Real bus recording playback

Interface to the Flextech Bus Monitor for chronological logging of CAN + A2B bus data



CAN Data Analyzer/Logger
Built-in Graphical Analyser
Built-in Offline Data Viewer

(With ASC and Peak™ TRC & XMT file support)

